



Technical data sheet

Modular support for wall-mounted basin

Sommario

DESCRIPTION	3
TECHNICAL NOTES	3
DIMENSIONS	4

Modular support for wall-mounted basin

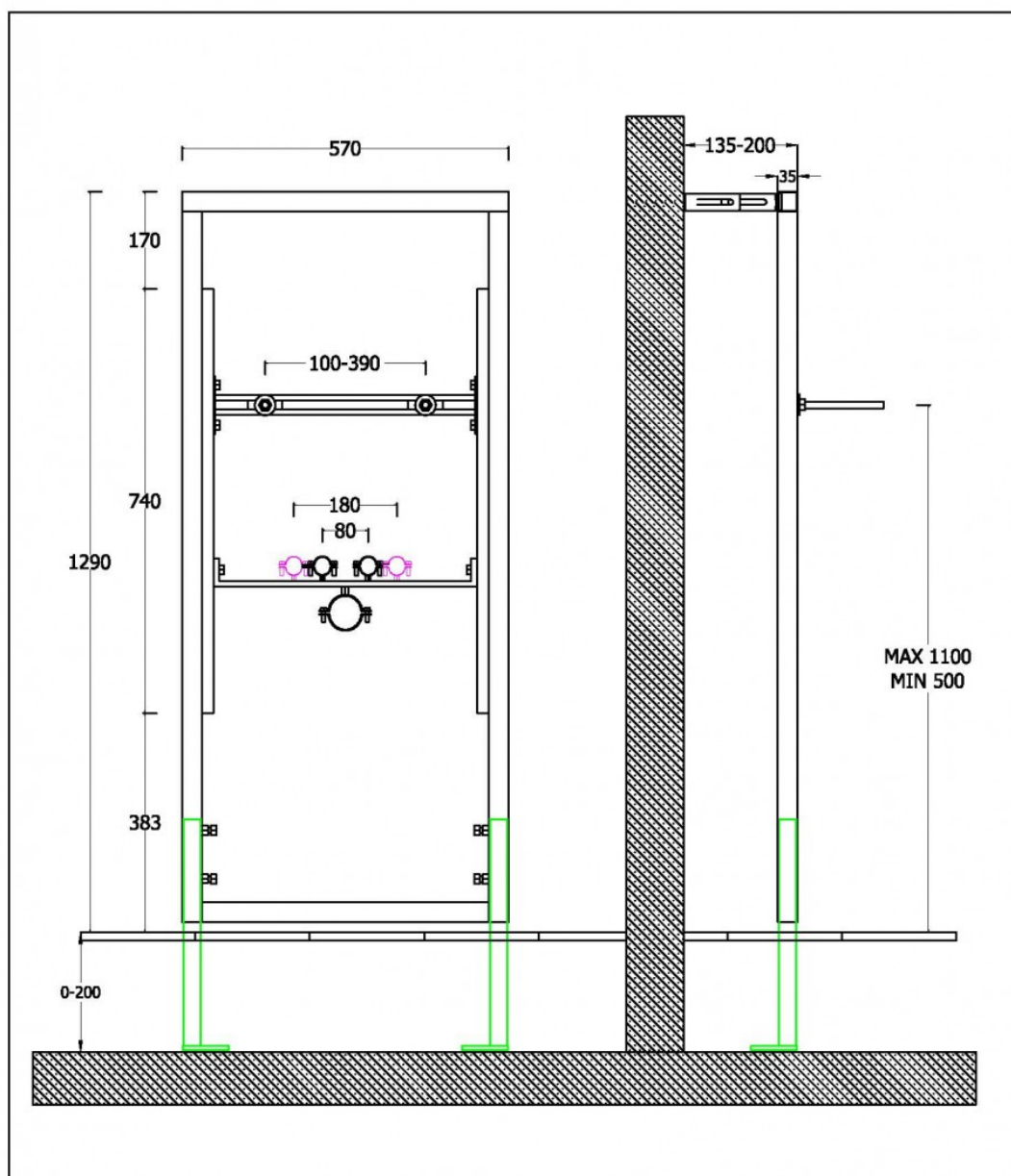
DESCRIPTION

Modular support in painted steel for wall-mounted washbasin (single or in sequence)

TECHNICAL NOTES

- Anti-oxidising tubular steel frame certified to current standards
- Module adjustment with telescopic feet 1275-1483mm
- Adjustable depth 132-200 mm
- Horizontal sliding washbasin bars
- Adjustable water element connection centre distances 80-180mm
- Mounting kit

DIMENSIONS



369065