



Technical data sheet

Universal support wall-mounted basin for plasterboard walls

Sommario

DESCRIPTION	3
TECHNICAL NOTES COD.369057	3
DIMENSIONS COD.369057	3
TECHNICAL NOTES COD.369057.IM	3
DIMENSIONS COD.369057.IM	4

Universal support wall-mounted basin for plasterboard walls

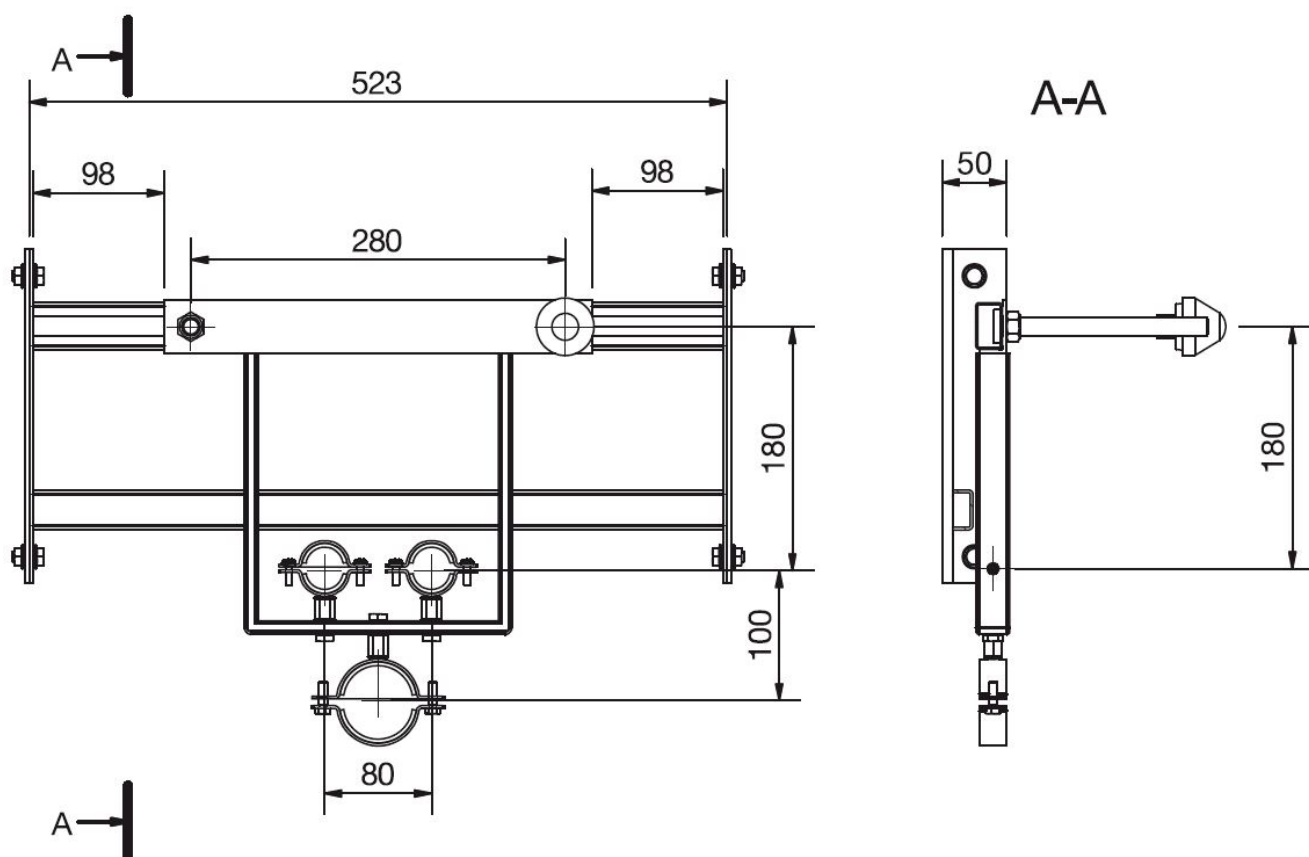
DESCRIPTION

Universal support with galvanized profile structure, with adjustable spacing, for suspended basin and plasterboard walls

TECHNICAL NOTES COD.369057

- Certified according to current regulations
- Width 523 mm
- Fixed centre distance basin fixing 280 mm
- Fixing kit

DIMENSIONS COD.369057



369057

TECHNICAL NOTES COD.369057.IM

- Certified according to current standards
- Suitable for disabled washbasins
- Width 750 mm
- Washbasin fixing with fixed centre distance (max. 625 mm)
- Fixing kit

DIMENSIONS COD.369057.IM

